

International Quest Engineering Ltd.

*"We are dedicated to providing
engineering and construction
services of the highest quality and
reliability utilizing the latest
Technology."*

INTRODUCTION

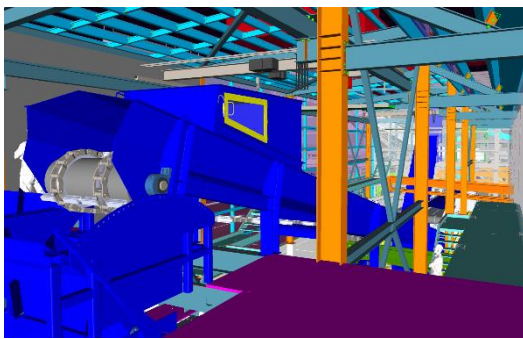
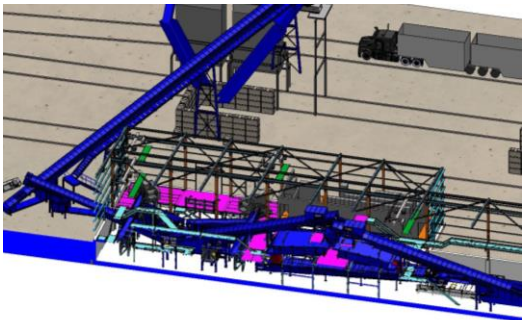
INTERNATIONAL QUEST ENGINEERING LTD. was officially incorporated in the Province of British Columbia on February 13, 1998. The success of our work is due to our commitment to providing a full package; from conceptual engineering through to commissioning, we have a dedicated staff offering years of specialized experience and support required to achieve our commitments. Our goal as a group is to be recognized not only for our quality of work, but for our commitment to the job and for exceeding our customer's expectations in all areas. We are dedicated to providing engineering and construction services of the highest quality and reliability utilizing the latest technology and have developed a reputation for successfully delivering projects on schedule and on budget. We are fully committed to our client's needs through every phase of a project, regardless of size or scope.

SERVICES

- Screening & Technical Feasibility Studies
- Economic Evaluations
- Resource & Fuel Supply Assessments
- Process Development & Design Basis Memoranda
- Conceptual Designs & Layouts
- Capital Cost Estimates
- Detailed Design
- Capital Equipment Tendering and Selection
- Project Management Services
- Procurement and Expediting
- Fabrication & Construction Services
- Commissioning & Ramp-up Assistance

AREAS OF EXPERTISE

- Material Handling Systems
- Process Implementation & Scale Up
- Pumping and Piping Design
- HVAC Systems
- Heat Transfer Systems
- Cranes, Monorails, & Overhead Lifting Devices
- Engineered Fall Protection Systems
- Engineered Foundations
- Structural & Building Design
- Construction Engineering
- Heating, Energy, & Biomass Systems
- 3D Design and Conceptualization



ENGINEERING

INTERNATIONAL QUEST ENGINEERING LTD. has experience in all phases of project development from new technology and pilot-plant scale-ups to detailed multi-discipline design projects. Through partnerships with pre-approved sub-consultants and technical specialists we can provide complete multi-discipline engineering services to our customers and clients. We have strong technical engineering qualifications in the following areas:

CIVIL

- Site Development - Grading, Drainage, Roads, & Paving

STRUCTURAL

- Foundation Design
- Site & Application Specific Buildings & Structures
- Cranes, Monorails, & O/H Lifting Devices
- Inspections & Certifications

MECHANICAL

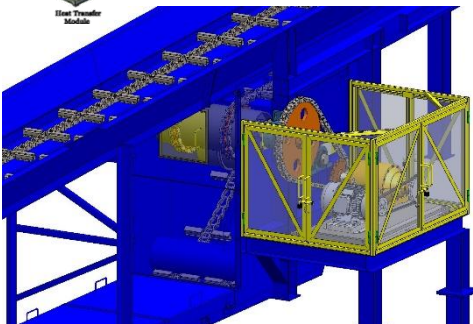
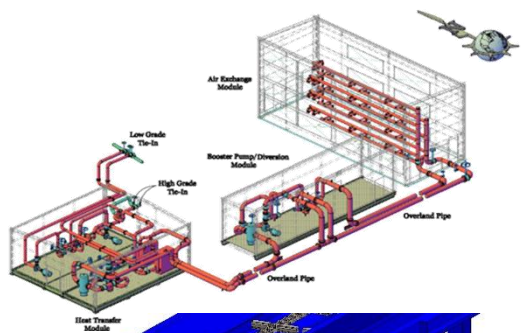
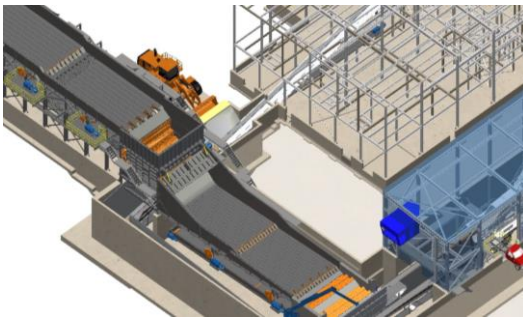
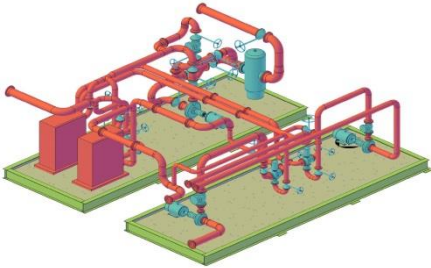
- Material Handling
- Piping Systems
- Pressure Vessels
- HVAC
- Dust Collection
- Heat Transfer Systems
- Heat Exchanger Design
- Thermal Engineering
- Stress Analysis
- Bulk Storage, Tankage, Mixing, & Loading Facilities
- Compressor Systems
- Pumping Stations
- Overland Pipelines
- Vibration Isolation
- 3rd Party Design Reviews

SAFETY

- Fall Protection Systems
- Safety Inspections & Certifications

ELECTRICAL, INSTRUMENTATION, & CONTROLS

In conjunction with reputable and pre-approved consultants, complete engineering services are offered including power distribution systems, instrumentation, controls, and customized software applications.



PROJECT MANAGEMENT

At **INTERNATIONAL QUEST ENGINEERING LTD.** we are committed to providing a full package, and our Project Management approach is tailored to the individual project to ensure each component and every stage is delivered as expected.

Our success is built on our ability to consistently deliver quality and value to our clients, whatever the size or complexity of the project. All projects, small and large, and regardless of location are managed according to their unique and specific requirements.

We have extensive experience executing projects in remote and challenging locations. Whether it's shipping requirements, design, or logistical hurdles, we coordinate all aspects of the project to ensure success. We pride ourselves in planning all aspects of the job and understanding capabilities and limitations improves project execution.

PROJECT MANAGEMENT SERVICES

- Cost Reporting/Projections
- Contractor Reconciliation
- Safety Systems & Protocols
- Project Scheduling
- Tender Preparation
- Bid Evaluation
- On-Site Engineering
- Project Acceptance & Sign-Off Documentation
- QA/QC Reporting and Documentation
- Procurement & Logistics
- Shipping & Expediting

COMMISSIONING SERVICES

International Quest Engineering Ltd. is committed to supplying it's customers a full service. In order to ensure each project is completed to the customer's satisfaction we develop a 'Commissioning Package' which provides our On-Site management, or Contractor's Representative, with the necessary procedures, records and acceptance documentation to fully commission the complete system from construction verification through to client turn-over. Our Commissioning Packages adhere to both International Quest Engineering Ltd.'s and our client's HSE policies and in accordance with the relevant site procedures and standards in effect at each project location.



CONSTRUCTION

INTERNATIONAL QUEST ENGINEERING LTD. provides a full range of industrial construction services through our wholly-owned subsidiary, Global Industrial Solutions Inc. We've earned a reputation for providing consistent quality and exceptional service to our customers while completing unique construction projects in some of the most remote and challenging locations, on budget and on schedule.

Safety is integral to all aspects of what we do and we approach it proactively and positively. The goal of our Health, Safety, and Environmental policy is to achieve zero-harm to people, environment, and equipment. We strongly believe the health, safety, and security of our employees is critical to our success.

FABRICATION

- Structural Steel
- Tanks / Bins / Hoppers / Chutes
- Process Piping (ASME Certification)
- Material Handling Equipment
- Security and Safety Systems
- Modular Assemblies for Field Erection
- Surface Preparation & Painting
- Fabrication QA/QC

INSTALLATION

Structural

- Ground Preparation
- Concrete
- Steel Erection
- Insulated Panels & Cladding
- Modular Buildings
- Wood Frame Construction
- Scaffolding
- Demolition & Disassembly

Electrical

- Power Distribution
- Power Generation
- Control Wiring
- Security Systems
- Communication Systems
- Instrumentation
- Software Implementation

Mechanical

- Process Equipment
- Pumps, Piping, & Valves
- Screens, Mixers, & Tanks
- Pressure Piping (ASME)
- Pipe & Equipment Insulation
- Fuel Delivery
- Power Generators
- HVAC

Project Management

- Construction Supervision
- Project Scheduling
- Procurement
- Expediting & Receiving
- On-Site Engineering
- Cost Control
- Safety Management
- Complete QA/QC



PROJECTS



- Sawmill Rebuild – Tolko Lakeview
- Woodroom Chipping Plant – Mercer International
- Heat Recovery – North American Tungsten Corporation Ltd.
- Genset Installation – North American Tungsten Corporation Ltd.
- Genset 213 / 214 Installation – Diavik Diamond Mines Ltd.
- Genset Fuel Delivery System – Diavik Diamond Mines Ltd.
- Conveyor Magnets - Diavik Diamond Mines Ltd.
- Processed Kimberlite Re-Entry - Diavik Diamond Mines Ltd.
- Mobile Rock Drill – AL Sims Group
- Process Recovery Plant – BHP Billiton Diamonds Inc.
- Mine Heat Recovery System – BHP Billiton Diamonds Inc.
- Diamond Sort Facility Expansion – Confidential Client
- Gasification Plant – Confidential Client
- Cone Crusher Modifications – DeBeers Snap Lake
- Audit Plant Rebuild - Diavik Diamond Mining Ltd.
- Saltwater Reclamation - BHP Billiton Diamonds Inc.
- Coarse Ore Storage Structural Repairs - BHP Billiton Diamonds Inc.
- Recovery Building, Structural Steel Modifications - Diavik Diamond Mines Ltd.
- Site Project Management – Fortune Minerals Hemlo, Ont.
- Recovery Plant Modifications - Diavik Diamond Mines Ltd.
- Safety Systems – Fall protection, lifting devices (custom applications), cranes
- Sawmill / Planer mill Modernization – West Fraser Chetwynd
- Chip Handling System – West Fraser Chetwynd
- Chip Handling System – West Fraser Williams Lake
- Various Mill Modifications – Interfor Adams Lake
- Mantle Building / Booster Pump Station - Highland Valley Copper
- Planer mill Modernization – West Fraser Smithers
- Sawmill / Planer mill Modernization – CANFOR Isle Pierre
- Fine Circuit Addition / Coal Load Out - Peace River Coal
- Material Handling & Ship Loading Facility – Fiberco Exports Ltd.
- Bio Waste Processing – West Fraser Smithers
- Bio Waste Processing – Canfor Bear Lake
- Bio Waste Processing – Isle Pierre
- Wareham Lake Dam Improvements - Yukon Energy Corp.
- Sawmill Modernization – West Fraser Hinton
- Bio Waste Processing – Dunkley Lumber
- Pellet Handling & Ship Loading Facility – Fiberco Exports Ltd.
- Sawmill Modernization – Lakeland Mills Ltd.
- Sawmill Rebuild - Lakeland Mills. Ltd.
- Planer mill Modernization – West Fraser Blue Ridge Lumber Ltd.
- Planer mill Modernization – West Fraser Hinton Forest Products
- Mobile Drill Rig - Confidential Client
- Conveying System Modifications – Endako Mines
- Process Water Modifications – Endako Mines
- Site Project Management, Procurement and Cost Control – Pacific Bio Energy
- Back Fill Plant Modernization – Diavik Diamond Mining Ltd.
- Various Buildings – Diavik Diamond Mining Ltd.
- Water Treatment Plant Modifications – DeBeers Snap Lake
- Various Upgrades – Canfor Intercon Pulp mill
- Sawmill and Planer mill Upgrades – Apollo Forest Products Ltd.

CLIENT LIST



For More Information Contact:

International Quest Engineering Ltd.
 1088 4th Avenue
 Prince George, BC V2L 3J1, Canada
 Phone: 250-612-0246
 Fax: 250-612-0276

- BHP Billiton Diamonds Inc. - Ekati Diamond Mine, NWT
- BHP Billiton Iron Ore - Port Hedlund, AU
- Canadian Forest Products Ltd.
 - Multiple Divisions
- Capstone Mining Corp. - Minto Mine
- Rio Tinto - Diavik Diamond Mine, NWT
- DeBeers Canada
 - Snap Lake Diamond Mine, NWT
 - Gahcho Kue Diamond Mine, NWT
- Dunkley Lumber
- Fortune Minerals Ltd.
- Fibreco Export Inc.
- Harrigan Lumber Company Inc.
- Hampton Affiliates Group
 - Multiple Divisions
- Mercer International
 - Multiple Divisions
- Millar Western Forest Products
- Nextera Energy Corp.
- North American Tungsten Corp. - Cantung Mine, NWT
- Organic Power Technologies Ltd.
- Pacific BioEnergy
- Peace River Coal Ltd. Partnership
- Pope & Talbot Ltd.
- Praxair
- Spectra Energy
- Sinclar Group of Companies
- Taseko Mines Ltd., Gibraltar Mine
- Teck Cominco Ltd., Highland Valley Copper
- Thompson Creek Metals Company Inc.
 - Endako Mines
 - Mount Miligan
- Tolko Industries Ltd.
 - Multiple Divisions
- University of Northern British Columbia
- West Fraser Mills Limited
 - Multiple Divisions
- Western Canadian Coal Corp.
- West Coast Energy
- Winton Global
- Yukon Energy