

International Quest Engineering Ltd.

*"We are dedicated to providing
engineering services of the highest
quality and reliability utilizing the
latest Technology."*

INTRODUCTION

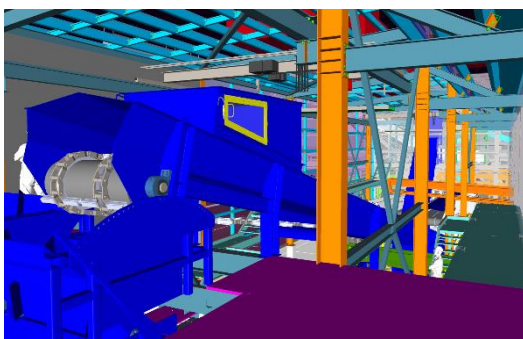
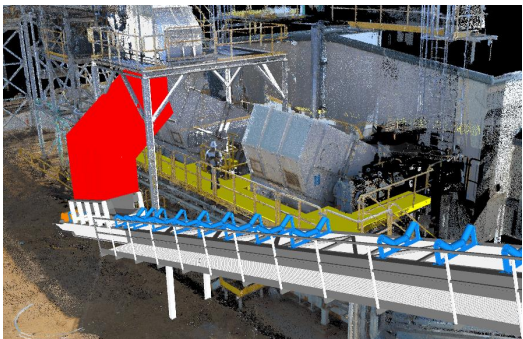
INTERNATIONAL QUEST ENGINEERING LTD. was officially incorporated in the Province of British Columbia on February 13, 1998. The success of our work is due to our commitment to providing quality work, and being responsive to client's needs and timelines. From conceptual engineering through to commissioning, we have a dedicated staff offering years of specialized experience and support required to achieve our commitments. Our goal as a group is to be recognized not only for our quality of work, but for our commitment to the job and for exceeding our customer's expectations in all areas. We are dedicated to providing engineering services of the highest quality and reliability utilizing the latest technology and have developed a reputation for successfully delivering projects on schedule and on budget. We are fully committed to our client's needs through every phase of a project, regardless of size or scope.

SERVICES

- Structural Engineering
- Mechanical Engineering
- 3D Scanning and Point Cloud Generation
- Technical Feasibility Studies
- Process Development
- Conceptual Designs & Layouts
- Capital Cost Estimates
- Capital Equipment Tendering and Selection
- Project Management Services
- Commissioning & Ramp-up Assistance

AREAS OF EXPERTISE

- Material Handling Systems
- Structural Design
- Mining Infrastructure
- Solid Wood Products
- Engineered Wood Products
- Biomass Systems
- HVAC & Building Mechanical
- 3D Scanning
- 3D Design & Conceptualization
- Pumping & Piping Design
- Cranes, Monorails, Lifting Devices
- Heat Transfer Systems
- Technical Writing



ENGINEERING

INTERNATIONAL QUEST ENGINEERING LTD. has experience in all phases of project development from new technology and pilot-plant scale-ups to detailed multi-discipline design projects. Through partnerships with pre-approved sub-consultants and technical specialists we can provide complete multi-discipline engineering services to our customers and clients. We have strong technical engineering qualifications in the following areas:

CIVIL

- Site Development - Grading, Drainage, Roads, & Paving

STRUCTURAL

- Site & Application Specific Buildings & Structures
- Equipment Support Structures
- Foundation Design
- Cranes, Monorails, & Overhead Lifting Devices
- Inspections & Certifications

MECHANICAL

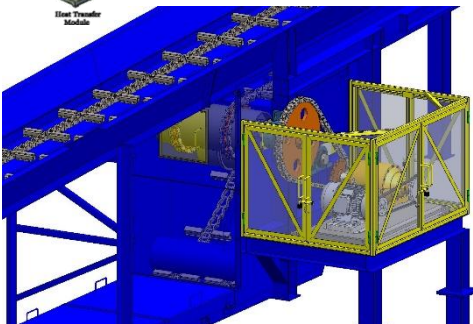
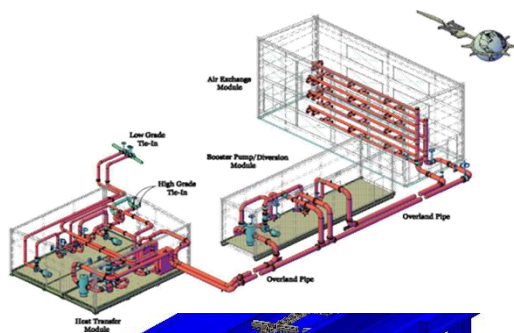
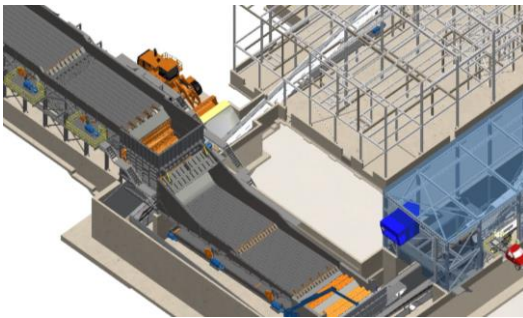
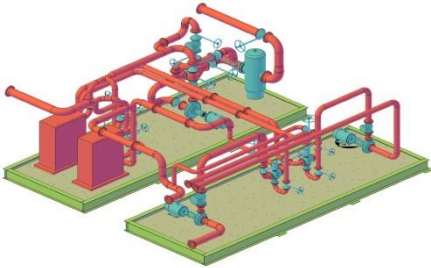
- Bulk Material Handling
- HVAC
- Building Systems
- Dust Collection Systems
- Piping Systems
- Heat Transfer Systems
- Thermal Engineering
- Stress Analysis
- Compressor Systems
- Pumping Stations
- Overland Pipelines
- Vibration Isolation
- 3rd Party Design Reviews

SAFETY

- Engineered Fall Protection Systems
- Safety Inspections & Certifications
- Local and Area Guarding

ELECTRICAL, INSTRUMENTATION, & CONTROLS

In conjunction with reputable and pre-approved consultants, complete engineering services are offered including power distribution systems, instrumentation, controls, and customized software applications.



PROJECT MANAGEMENT

At **INTERNATIONAL QUEST ENGINEERING LTD.** we are committed to providing a full package, and our Project Management approach is tailored to the individual project to ensure each component and every stage is delivered as expected.

Our success is built on our ability to consistently deliver quality and value to our clients, whatever the size or complexity of the project. All projects, small and large, regardless of location, are managed according to their unique and specific requirements.

We have extensive experience executing projects in remote and challenging locations. Whether it's shipping requirements, design, or logistical hurdles, we have experience with all aspects of the project to ensure success.

PROJECT MANAGEMENT SERVICES

- Tender Preparation
- Bid Evaluation
- Coordinating Registered Professional (CRP) Services
- Cost Reporting/Projections
- Safety Systems & Protocols
- Project Scheduling
- Project Acceptance & Sign-Off Documentation
- Regulatory Compliance
- Risk Assessment and Mitigation
- Construction Supervision

COMMISSIONING SERVICES

International Quest Engineering Ltd. is committed to supplying its customers a full service. In order to ensure each project is completed to the customer's satisfaction we develop a 'Commissioning Package' which provides our On-Site management, or Contractor's Representative, with the necessary procedures, records and acceptance documentation to fully commission the complete system from construction verification through to client turn-over. Our Commissioning Packages adhere to both International Quest Engineering Ltd.'s and our client's HSE policies and in accordance with the relevant site procedures and standards in effect at each project location.



PROJECTS



Life of Mine Upgrade Project – Newmont Brucejack Mine
 Substation Expansion– Newmont Knipple Substation
 Soils Lab HVAC Remediation – Newmont Red Chris Mine
 Seepage Interception Pipeline – Newmont Red Chris Mine
 Building Mechanical Systems – IDL Projects Gitxaala Longhouse
 Sawmill Rebuild – Tolko Lakeview
 Woodroom Chipping Plant – Mercer Peace River
 LHG Trimline Modernization – Mercer Mass Timber
 Residual System Modernization – Tolko High Level
 Sawmill Modernization – Tolko Lakeview
 HVAC System Upgrade & Modernization – UBACARE
 Chipping & Screening Process Modernization – West Fraser Smithers
 Heat Recovery – North American Tungsten Corporation Ltd.
 Genset Installation – North American Tungsten Corporation Ltd.
 Genset 213 / 214 Installation – Diavik Diamond Mines Ltd.
 Genset Fuel Delivery System – Diavik Diamond Mines Ltd.
 Conveyor Magnets - Diavik Diamond Mines Ltd.
 Processed Kimberlite Re-Entry - Diavik Diamond Mines Ltd.
 Process Recovery Plant – BHP Billiton Diamonds Inc.
 Mine Heat Recovery System – BHP Billiton Diamonds Inc.
 Diamond Sort Facility Expansion – Confidential Client
 Cone Crusher Modifications – DeBeers Snap Lake
 Audit Plant Rebuild - Diavik Diamond Mining Ltd.
 Saltwater Reclamation - BHP Billiton Diamonds Inc.
 Coarse Ore Storage Structural Repairs - BHP Billiton Diamonds Inc.
 Recovery Plant Modifications - Diavik Diamond Mines Ltd.
 Sawmill / Planermill Modernization – West Fraser Chetwynd
 Chip Handling System – West Fraser Chetwynd
 Chip Handling System – West Fraser Williams Lake
 Mantle Building / Booster Pump Station - Highland Valley Copper
 Planermill Modernization – West Fraser Smithers
 Sawmill / Planermill Modernization – CANFOR Isle Pierre
 Fine Circuit Addition / Coal Load Out - Peace River Coal
 Material Handling & Ship Loading Facility – Fiberco Exports Ltd.
 Bio Waste Processing – West Fraser Smithers
 Bio Waste Processing – Canfor Bear Lake
 Bio Waste Processing – Isle Pierre
 Wareham Lake Dam Improvements - Yukon Energy Corp.
 Sawmill Modernization – West Fraser Hinton
 Pellet Handling & Ship Loading Facility – Fiberco Exports Ltd.
 Sawmill Modernization – Lakeland Mills Ltd.
 Sawmill Rebuild - Lakeland Mills. Ltd.
 Planermill Modernization – West Fraser Blue Ridge Lumber Ltd.
 Planermill Modernization – West Fraser Hinton Forest Products
 Conveying System Modifications – Endako Mines
 Process Water Modifications – Endako Mines
 Back Fill Plant Modernization – Diavik Diamond Mining Ltd.
 Water Treatment Plant Modifications – DeBeers Snap Lake
 Sawmill and Planermill Upgrades – Apollo Forest Products Ltd.

CLIENT LIST



For More Information Contact:

International Quest Engineering Ltd.

1088 4th Avenue

Prince George, BC V2L 3J1, Canada

Phone: 250-612-0246

Email: mailbox@iqeng.com

- Apollo Forest Products
- BC Housing
- BHP Billiton Diamonds Inc. - Ekati Diamond Mine, NWT
- BHP Billiton Iron Ore - Port Hedlund, AU
- Canadian Forest Products Ltd.
- Capstone Mining Corp. - Minto Mine
- Carrier Forest Products Ltd.
- Centerra Gold
- City of Prince George
- Conifex Timber
- DeBeers Canada
 - Gahcho Kue Diamond Mine, NWT
 - Snap Lake Diamond Mine, NWT
- Fibreco Export Inc.
- Fortune Minerals Ltd.
- Geotech Drilling Services Ltd.
- Hampton Affiliates Group
- Harrigan Lumber Company Inc.
- IDL Projects Inc.
- Imperial Metals – Mount Polley Mine
- Interfor Corporation
- Mercer International
- Newmont Corporation
- NextEra Energy Corp.
- North American Tungsten Corp. – Cantung Mine
- Organic Power Technologies Ltd.
- Rio Tinto - Diavik Diamond Mine, NWT
- Sinclar Group of Companies
- Spectra Energy
- Taseko Mines Ltd., Gibraltar Mine
- Thompson Creek Metals Company Inc.
 - Endako Mines
 - Mount Milligan
- Tolko Industries Ltd.
- West Fraser Mills Limited
- Winton Global
- Yukon Energy